

# The Roaring '20s and the Great Depression

Chapter 20-23

# SSUSHS

- **SSUSH16 The student will identify key developments in the aftermath of WW I.**
- a. Explain how rising communism and socialism in the United States led to the Red Scare and immigrant restriction. **(20.1)**
- b. Identify Henry Ford, mass production, and the automobile. **(17.1, 20.3)**
- c. Describe the impact of radio and the movies. **(21.3, 23.4)**
- d. Describe modern forms of cultural expression; include Louis Armstrong and the origins of jazz, Langston Hughes and the Harlem Renaissance, Irving Berlin, and Tin Pan Alley. **(21.4)**

# Politics of the Roaring Twenties

Chapter 20

# Section 1—America Struggles with Post War Issues

## The Effects of Peace on the Public

- War leaves Americans **exhausted**
- **Economy** adjusting: cost of living doubles; farm, **factory orders down**
  - Returning soldiers face unemployment or took their old jobs away from women/minorities
- **Nativism**—prejudice against foreign-born people—sweeps nation
- **Isolationism**—pulling away from world affairs—becomes popular

## CAUSES

- **World War I exhausts Americans**
- **Americans want a return to simpler times before World War I**
- **Communist Revolution in Russia alarms U. S.**
- **Some Americans believe post-war labor unrest caused by immigrant anarchists and socialists**



## Isolationist Policy of 1920s

## EFFECTS

- **U. S. does not support League of Nations**
- **U. S. passes high tariffs that reduce international trade**
- **U. S. limits immigration from Japan and parts of Europe**
- **U. S. moves toward political conservatism**

# Fear of Communism

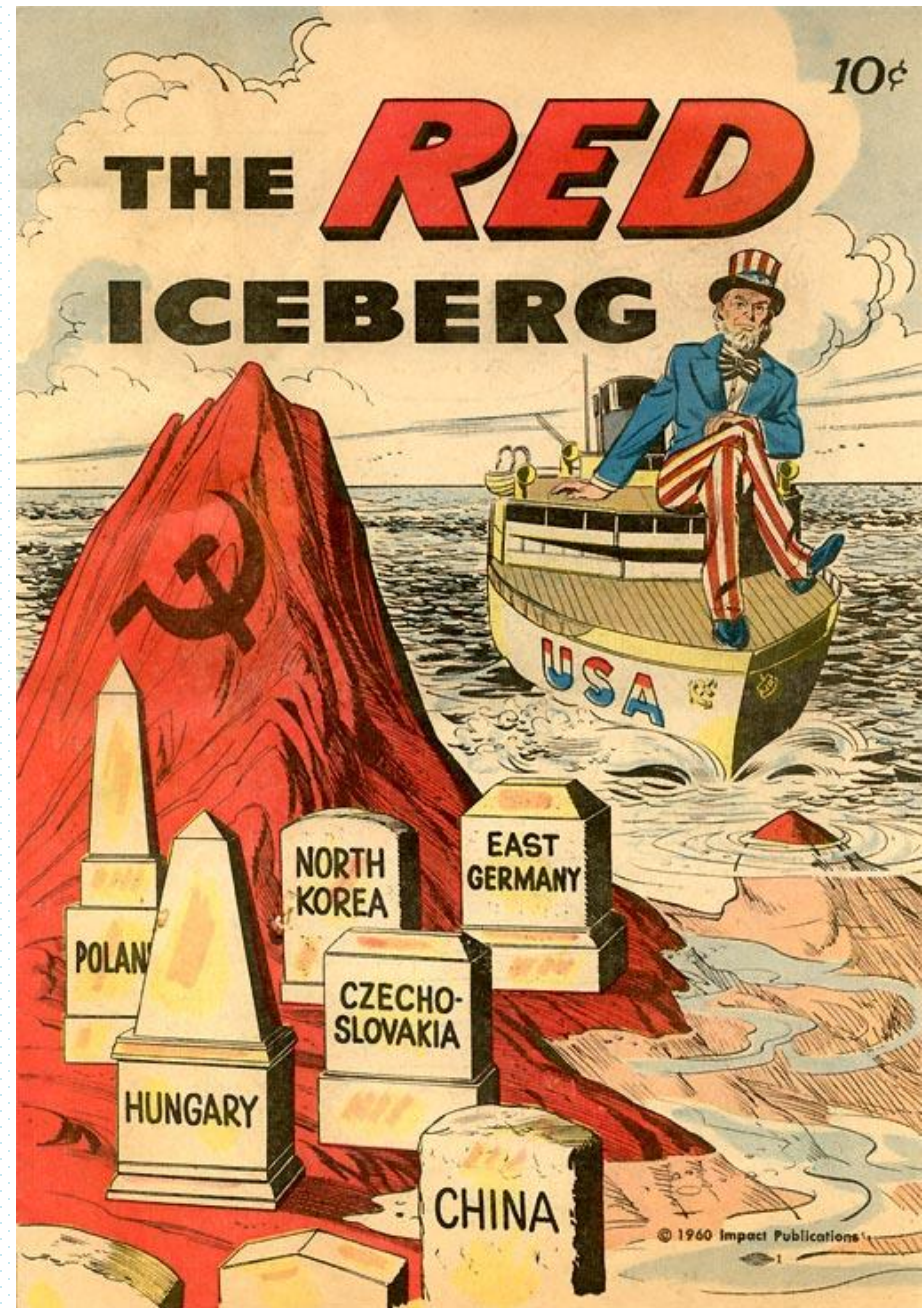
## The Red Scare

- **Communism**—economic, political system, single-party government
  - ruled by dictator
  - no private property
- 1919 Vladimir Lenin, Bolsheviks, set up **Communist** state in **Russia**
- **U.S. Communist Party forms**
- Bombs mailed to government, businesses; people fear **Red conspiracy**
- Attorney General A. Mitchell Palmer takes action with **Palmer Raids**—hunts down Communists, anarchists



# RED SCARE

- Fear led to the government looking for suspected Communists and Socialists



# Limiting Immigration: Keep America for Americans

## Anti-Immigrant Attitudes

- Nativists believe: fewer unskilled jobs available, fewer immigrants needed
- Many think immigrant anarchists and socialists are Communist

## The Quota System

- sets maximum number can enter U.S. from each country
- 1924-Limited people from eastern and southern Europe









# Racial Tension

- White soldiers returning compete w/ African Americans for jobs, housing.
- **Ku Klux Klan** becomes national force targets blacks, immigrants, Jews, Catholics, Communists



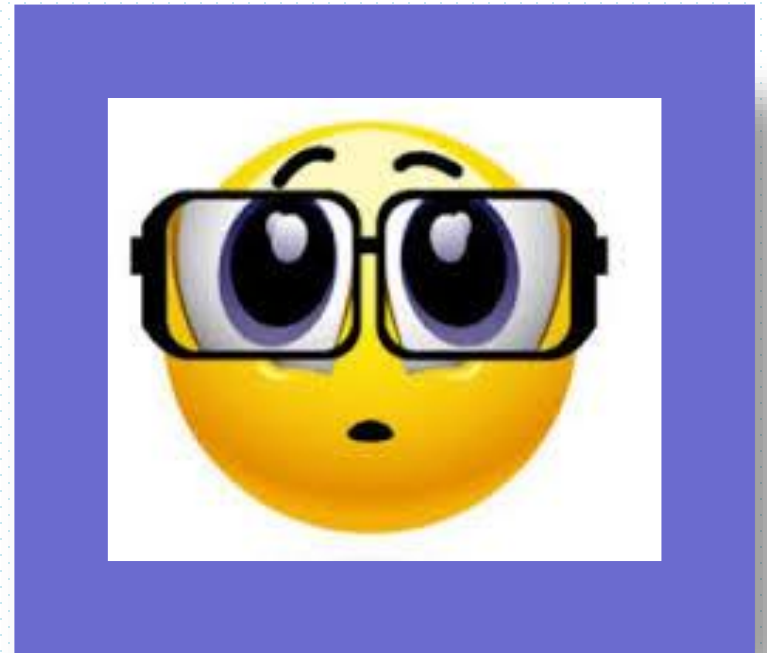
# Quick Write



- On your dry erase board, brainstorm some causes that led to an industrial boom after World War I.

# Classwork

- Each group will represent a household
  - Figure your monthly disposal income
  - Do a little shopping
  - Spend a Little MORE!





# Directions

- Each table will select a household scenario
- You will have to analyze your primary sources to determining your monthly income and expenditures
- If you are left with disposable income, you may shop
- 10mins



# CONGRATULATIONS!

- As a result of a yearlong increases of consumer buying power through installment plans, the nation's economy is **BOOMING!**
- You have earned a \$.45 per hour raise
  - Complete the 2<sup>nd</sup> section of the budget
  - Remember to the debt you incurred from last year's budget sheet.
  - Are you able to buy more items?



# Tragedy Strikes

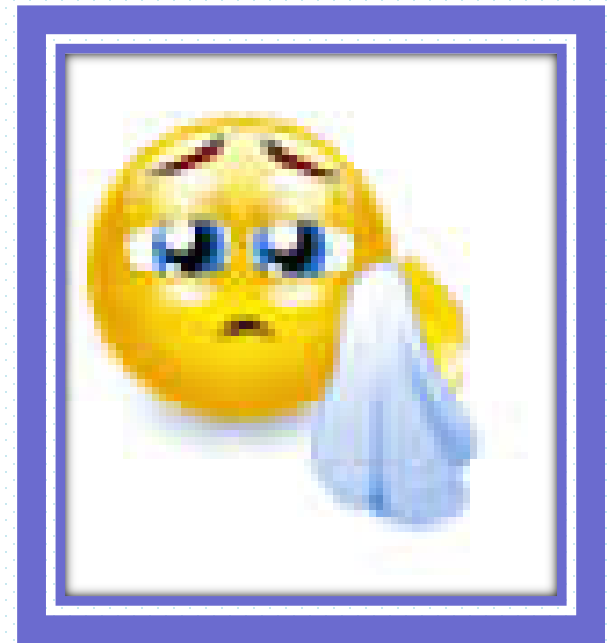


- Although the nation has enjoyed a period of sudden “buying power”, we are currently experiencing a period of overproduction.
- ***What are some potential consequences?***



# Your Scenario has Changed

- How does that impact your budget?
- Complete the 3 section of budget
  - Make necessary salary adjustments
  - Remember to include your debt
- Are you still in a position to buy stuff? If so, will you continue to shop?



# Scenario

1. Your union has called for a strike. Do you walk off your job or accept a \$.40 pay cut.

2. Your spouse has been laid off and cannot find work.

3. You have been promoted to supervisor with a \$.15 raise if you are willing to fire 20 of your colleagues.

4. Your spouse has been laid off because he/she is expected to have communist ties.

5. Your company is going out of business. You've been offered a service worker job.

6. The rail workers are striking again. Do you support the strike or accept \$.10 raise to be a strike breaker?

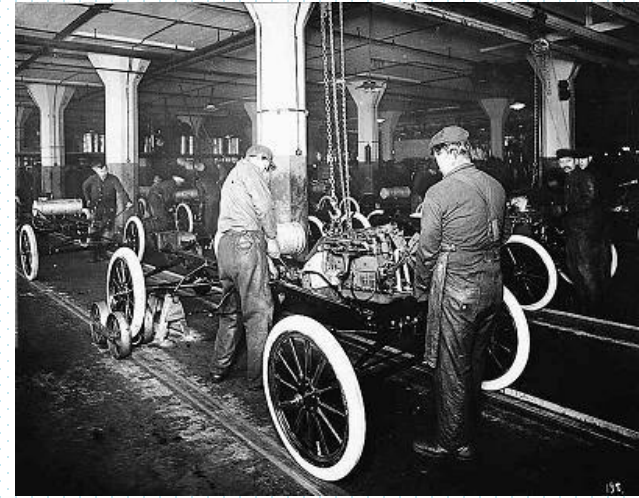
10—You have gone out of business because your family has been investigated by At. General Palmer.

11. No one is building homes. You have lost 20% of your annual income. Do you layoff 100 employees to maintain your comfort

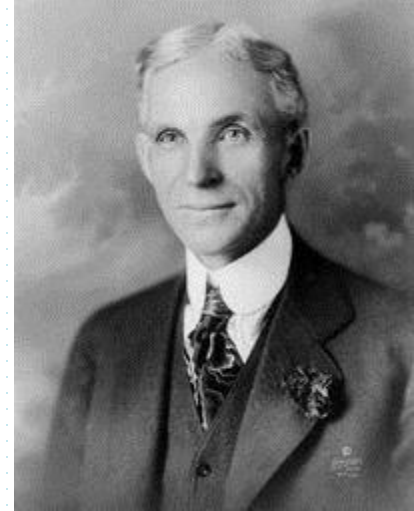
12. Government is creating stricter labor regulations. Your profits have dwindled by 40%.

# Section 3-The impact of the Automobile

- During the 1920s, Americans enjoyed a new standard of living. Wages increased and work hours decreased.
- **Mass production** or large-scale product manufacturing usually done by machinery, increased the supply of goods and decreased costs.
- The assembly line, used by carmaker **Henry Ford**, greatly increased manufacturing efficiency by dividing up operations into simple tasks that unskilled workers could perform.



# Henry Ford



- Ford changed American life with his affordable automobiles. Small businesses—garages, gas stations opened. The isolation of rural life ended. People could live farther away from work—creating the auto commuter.

The Model T



**"People can have the Model T in any color – so long as it's black." –Henry Ford**

# Superficial Prosperity

## Production And Buying Goods On Credit

- During the 1920s, as workers produced more goods, businesses grew
- To sell the **overproduction** of goods, **Installment Plan** encouraged—buy goods on credit, pay over a period of time at low interest rate
  - Aimed to solve problem of **underconsumption**=consumers' reluctance to buy products
  - Americans start spending more than they have...



# The Roaring Life of the 1920s

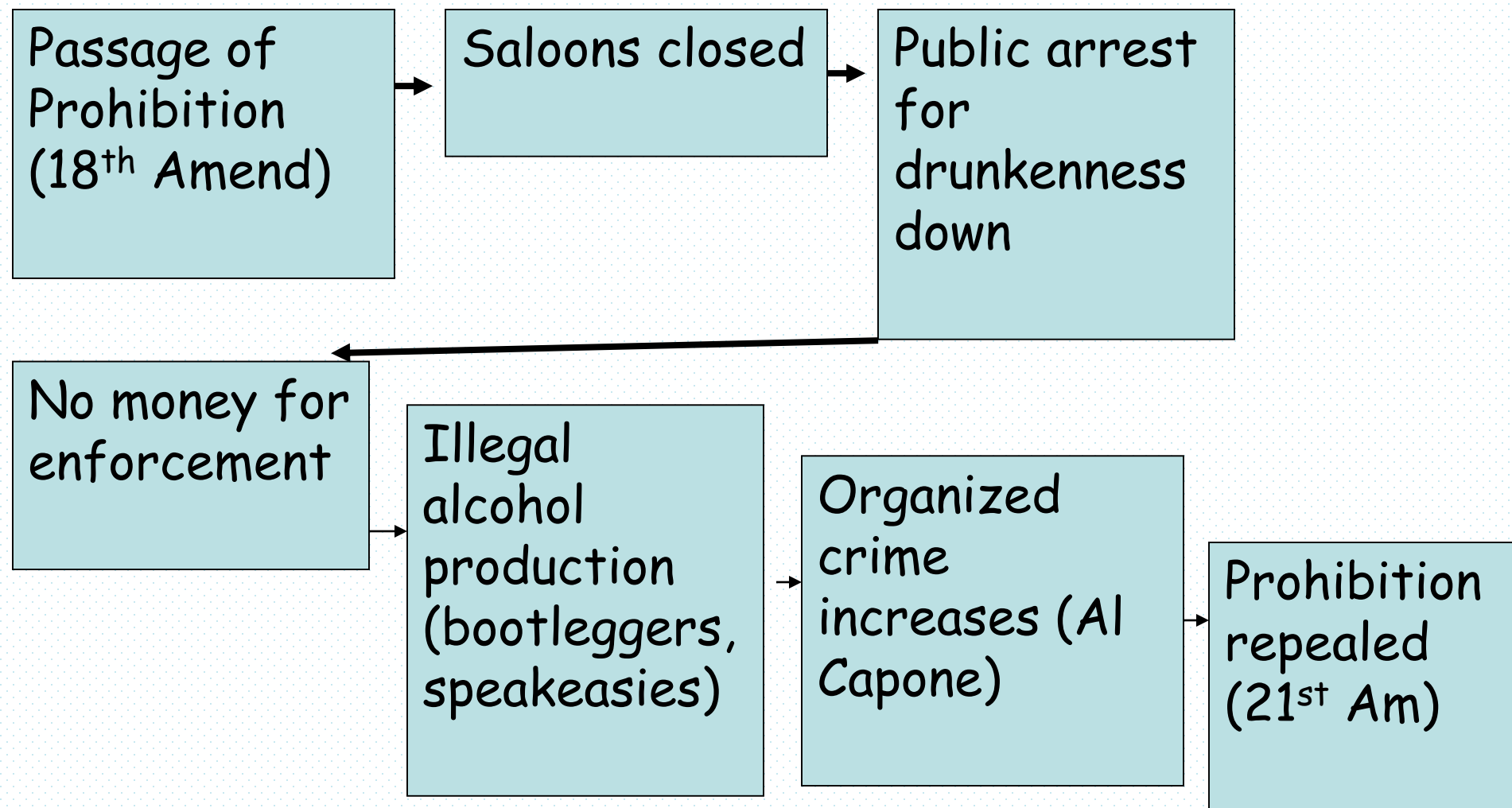
## Chapter 21

# Quick Write

- Should the government have the right to decide how citizens spend their leisure time? Why/Why not?

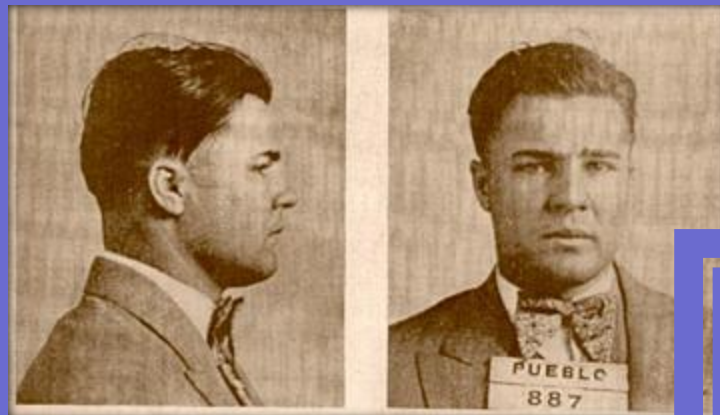
Dry Erase Board

# Section 1-The Prohibition Experiment and Organized Crime (Pgs. 642-643)





# Cities struggle with prohibition and organized crime



## 'Pretty Boy' Dies With 15 Bullets In Back

By Associated Press.

**EAST LIVERPOOL, Ohio, Oct. 21.**—Charles ARTHUR ("Pretty Boy") FLOYD, infamous outlaw whose bullet-riddled prison jail over a dozen Mid-Western States, is dead.

Admired to the limit, the brigand might as the "Trigger Man" in the KANSAS CITY Police Station Division of June, 1933, struck tall and fat when the law started up with him. Fifteen bullets tore into his body—along one into his spine.

**PUBLIC ENERGY NO. 1**

The newspaper, listed at Public Energy No. 1, states the death of John Dillinger exactly three months ago.

ago, was normally wounded his forehead as he walked back, seven miles north of here.

His assassin was Melvin Purvis of the Department of Justice—the man who got college—aided by three of his agents and four East Liverpool policemen.

No lacking in drama, or quirk, was the death of the desperado that it showed the peaceful countryside only after the full impact of the slaying became known.

**DEAD IN CORN FIELD**

Floyd crumpled up in a corner of the field, but fell from a corn stalk, where he had taken refuge, before

Continued on Page 2, Column 1.

# Section 2

## The Twenties Woman

How have women's clothing changed!

- 1800s



1900s



# Margaret Sanger

- American Birth Control League in 1921



# The New Woman



Photos © The Photograph  
Copyright 2000  
www.thephoto.com



# Section 3—Impact of Radio and the Movies

- 2 important developments of the 1920s—**Radio** and **Movies**
  - Radio unites the nation and gives political leaders direct access to the people
  - **KDKA**—first commercial radio station
  - **Movies**: Silent pictures then movies with sound (talkies) appear on big screen
  - **Movies** help define **national** culture: people copy movie stars looks, clothes, cars

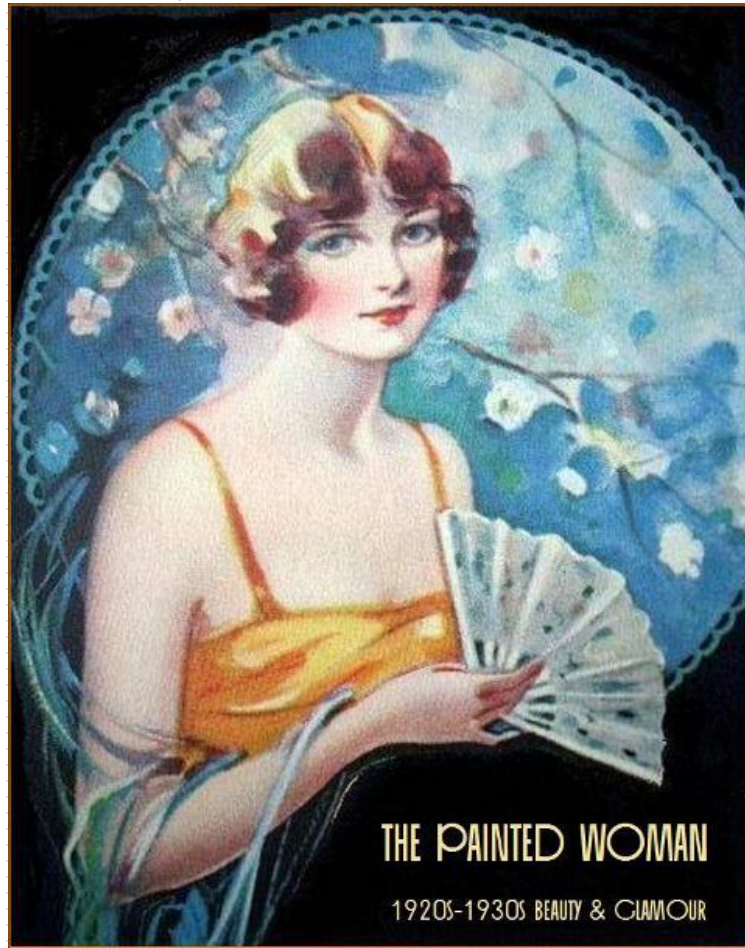


# Radio and Movies



# Did You Know?

- During the 1920s, cosmetic sales soared as women tried to copy the look of Hollywood movie stars. The average American woman used about one pound of face powder a year.



# Section 4 – The Harlem Renaissance

- In New York City's neighborhood of **Harlem**, African Americans created **literary** and **artistic** work that demonstrated racial pride and a sense of community. This became known as the **Harlem Renaissance**



- **Langston Hughes's** poems describe difficult lives of working class African Americans (P.665)
  - many written in jazz, blues tempo



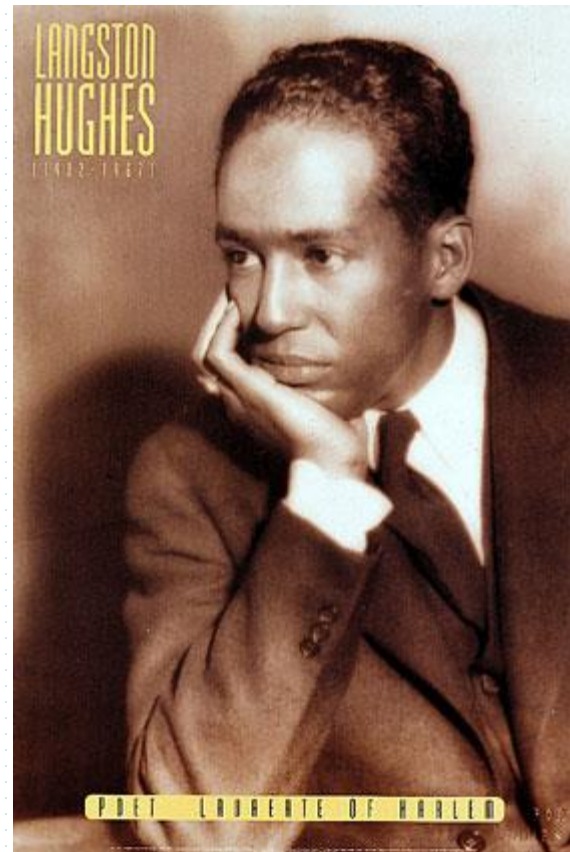
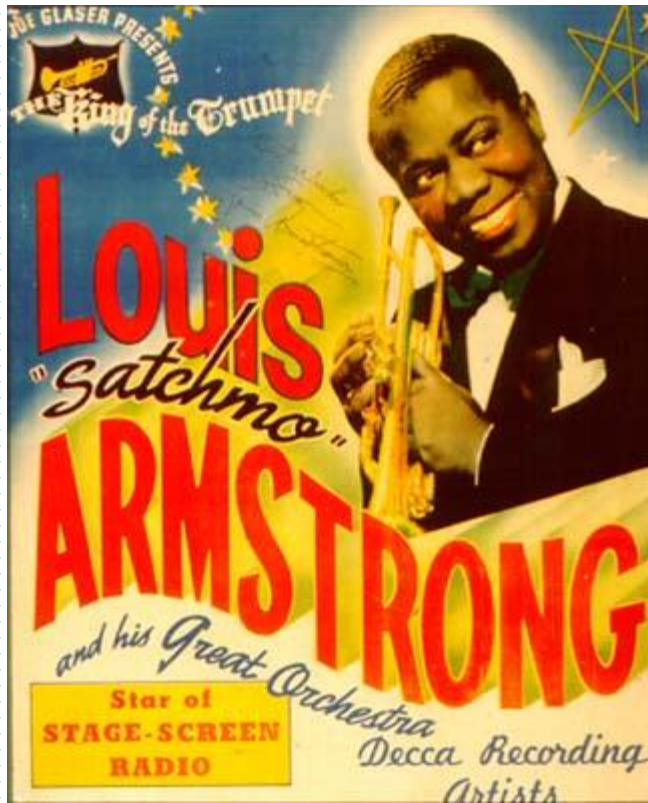


# African Americans and the Jazz Age

- **Jazz** becomes popular form of music after WWI out of New Orleans (mixes ragtime and blues)
- Louis Armstrong, a trumpeter & singer, among most famous jazz musicians
- Jazz crosses boundaries- black and whites both love it
- In Harlem's Cotton Club, famous African American musicians like Duke Ellington got their start



# Musicians and Writers



# Tin Pan Alley

- **Tin Pan Alley** is the nickname given to the collection of New York City-centered music publishers and songwriters in the late 1890s.
- **Irving Berlin** was a Jewish American songwriter
  - Berlin eventually composed over 3,000 songs, many of which (e.g. "God Bless America", "White Christmas", "Anything You Can Do", "There's No Business Like Show Business")