



Student Teach

All submissions are due by 9:00a.m. Monday, December 12th
to www.Classroom.Google.com: 2bd5jwy



Group Assignments

- Send One member from Each Group to select Chapter Assignment
- Spend 2mins discussing who would like to contribute what to the project
- Keep in mind, regardless of your role, EACH of you will be responsible for answering questions your class posed for your chapter.



Chapter Assignments →

Period	Group 1	Group 2	Group 3	Group 4
2 nd	1&6	2&8	3&4	5&7
3 rd	1&8	2&5	4&6	
5 th	1&3	2&6	4&7	5&8
6 th	1&6	2&5	3&4	
7 th	1&4	2&5	3&7	6&8

Period	Group 1	Group 2	Group 3	Group 4
2 nd	15	16	14	13
3 rd	15	16	14	
5 th	15	16	13	14
6 th	14	15	16	
7 th	14	13	16	15

See Student Teach Directions

Take 2 minutes and read your instructions? Write down any questions you may have.

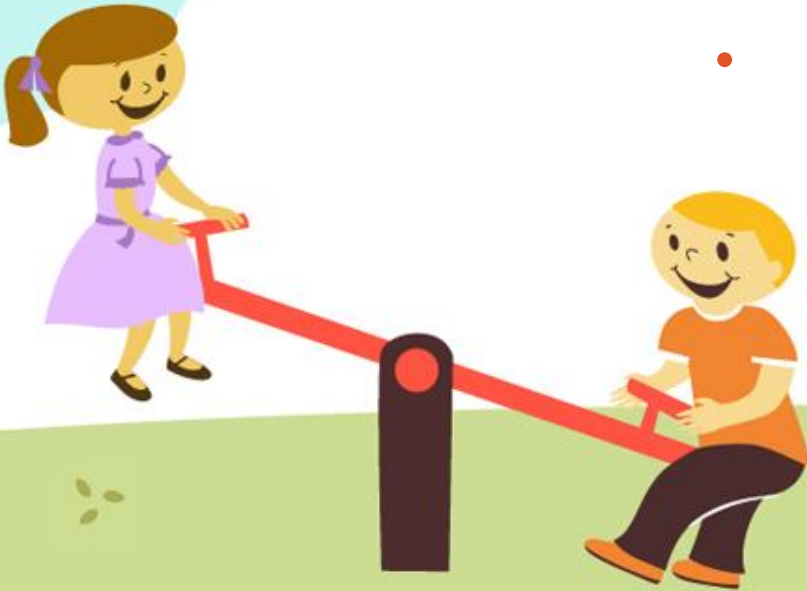


Questions?



Look at Grading Rubric

- Pay close attention to each expectation and point value (see PPT/VA)
- Remember to rehearse your part and be familiar with everyone's part
- PLEASE Do Not READ to Us 😊
- Comprehension- I will ask each group member a question about his/her chapter. Questions will come from Homework 40



Sample Questions for Homework 40 (due: 12/09)

- You may not use my examples
 - Who was Thomas Edison?= 0pts
 - How did Thomas Edison impact our nation's economic system= 5pt
 - What were some consequences of Edison's invention of the light bulb and how did they impact our nation politically?=10pts 😊

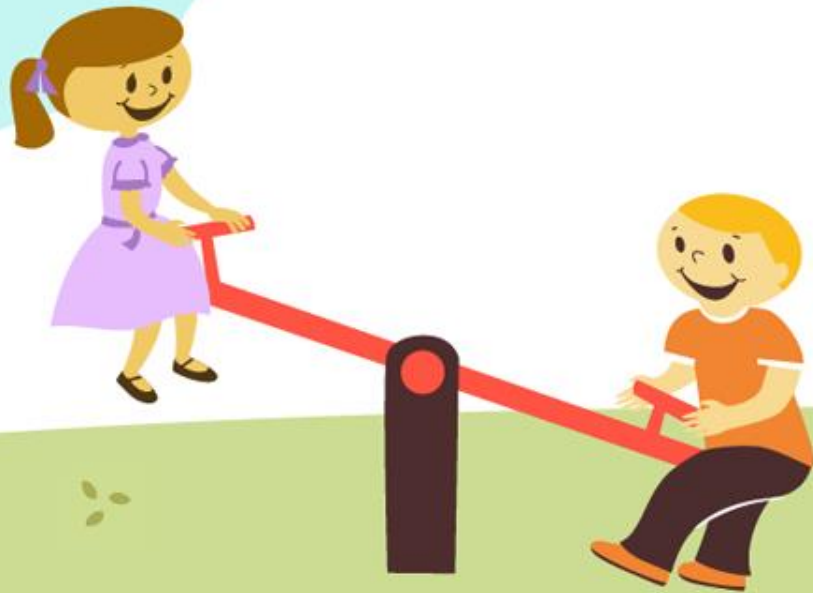
Remember to ANSWER the Question: 10pts

HW#40 is now worth 50pts

- 40pts-1 question per chapter
- 10pts-quality answer to each question



Example for HW#40



Your Name _____ Period ____ Group's Ch. ____

HW#40

Dec 09, 2016

Chapter 13 Title

Question: Write an **EXCELLENT** question

Answer: Write a **THOROUGH** answer

Chapter 14 Title

Question: Write an **EXCELLENT** question

Answer: Write a **THOROUGH** answer

Repeat for Chapters 15 and 16. YES, you must still provide questions for Chapter 13 even if your class is not presenting Chapter 13 😊

Typed on **NEATLY** handwritten. I cannot grade it if I cannot read it 😞

Lesson Plan Expectations (due: 12/08)

Group Members: Member 1, Member 2, Member 3, Member 4, etc.

Period: _____ Group # _____ Group Chapter # _____ Presentation Date: _____

Chapter Title

Essential Question/Goal: How should students complete a quality lesson plan (q)
/Students will have a clear understanding of what the lesson plan should look like (g)
(Choose one approach)

Opening Activity:

- Student(s) Name(s)
- Description of Activity
- Expected Time Frame

Procedure:

- Section One Title: Student(s) Name(s)
 - Question/Answer 1
 - Question/Answer 2
 - Question/Answer 3
- Repeat Steps for Section 2, 3 and 4 (Chapter 16)

Closing Activity:

- Student(s) Name(s)
- Description of Activity
- Expected Time Frame

- Because I had to combine groups, I removed the expectation of the individual graphic organizers.
- **HOWEVER**, HW#40 is now worth 50pts.
- **PLEASE**, review revised HW#40 slide
- Your project is still worth 150pts.
- **REMEMBER**, there is NO accepted late work.



In Case of an Emergency EXCUSED Absence

- Absent on Friday, December 09
 - Parents should email me acknowledging your current grade (if you did not return print out early)
 - You should email your 4 questions and answers in a properly headed PDF to baileya1@fultonschools.org by the start of the class period.
- Absent on Presentation Day
 - Email a properly outline of your group's chapter
 - Outline must include ALL headings, subheadings, summaries and vocabulary
 - Example
 - Title of Chapter
 - I. Title of Section I
 - A. Subheading
 - 1. Summary
 - 2. Key Vocabulary

**Due on presentation
day by end of the
class period.**

