

No Bell Ringer

Good Morning/Afternoon

- Student Choice
 - Identify people you would like to work with
 - Create groups of 4-6 members
 - We will adjust if necessary



Student Teach Project

All submissions are due by 9:00a.m. Monday,
December 04th to your Google Classroom.



Group Chapter Assignments

- Send One member from Each Group to randomly select Chapter Assignment
- Spend 2mins discussing who would like to contribute what to the project
- Keep in mind, regardless of your role, EACH of you will be responsible for answering questions your class posed for your chapter.

Period	Group 1	Group 2	Group 3	Group 4
3 rd				
4 th				
6 th				
7 th				

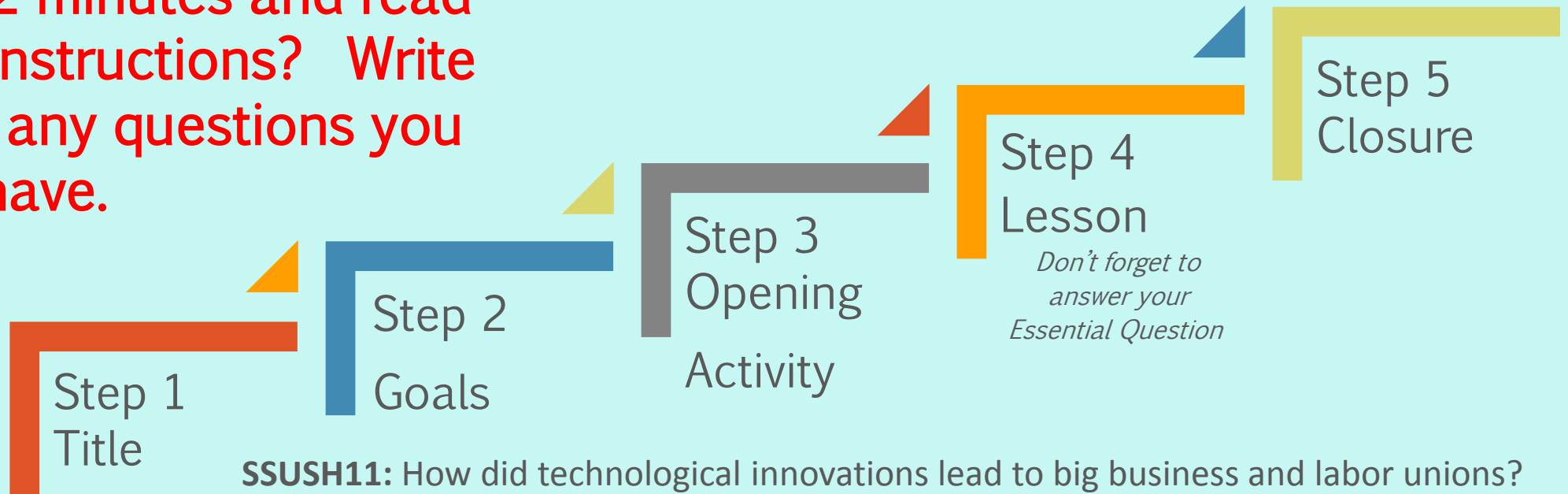
Period	Group 5	Group 6	Group 7	Group 8
2 nd				
3 rd				
5 th				
6 th				
7 th				



Questions?

See Student Teach Directions

Take 2 minutes and read your instructions? Write down any questions you may have.



SSUSH11: How did technological innovations lead to big business and labor unions?

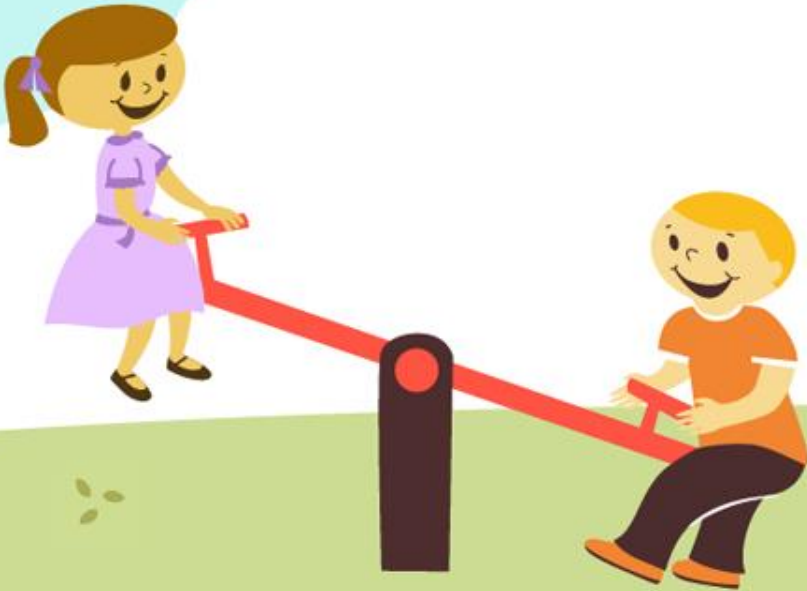
SSUSH12: How did fulfilling our manifest destiny impact the Plains Indians?

SSUSH13: How did the Progressive Era transform America socially and politically?



Look at Grading Rubric

- Pay close attention to each expectation and point value
- Remember to rehearse your part and be familiar with everyone's part
- PLEASE Do Not READ to Us 😊
- Comprehension- I will ask each group member a question about his/her chapter.
- Questions will come from Homework 42



Sample Questions for Homework 42 (due: 12/01)

- You may not use my examples
 - Who was Thomas Edison?= 0pts
 - How did Thomas Edison impact our nation's economic system?= 2pt
 - What were some consequences of Edison's invention of the light bulb and how did they impact our nation politically?=3pts 😊

Remember to ANSWER the Question: 2pts each

HW#40 is now worth 20pts

- 12pts-1 question per chapter
- 8pts-quality answer to each question



Example for HW#42

Follow the Sample

Due: December 01, 2017

- Everyone should preview each chapter to develop questions and answers.
- Consider using your notes from Standards 11, 12 & 13.
- Follow Format



20pts

Your Name _____ Period ____ Group's Ch. ____

HW#40

Dec 01, 2017

Chapter 13 Title

Question: Write an EXCELLENT question

Answer: Write a THOROUGH answer

Chapter 14 Title

Question: Write an EXCELLENT question

Answer: Write a THOROUGH answer

Repeat for Chapters 15 and 16. YES, you must still provide questions for Chapter 13 even if your class is not presenting Chapter 13 😊

Typed or NEATLY handwritten. I cannot grade it if I cannot read it 😊

Lesson Plan Expectations (due: 11/30)

Rubric:

- Followed Format-----2pts
- Essential Question----3pts
- Opening Activity-----5pts
- Procedures-----25pts
- Closing Activity-----5pts
-
- 40pts

Group Members: Member 1, Member 2, Member 3, Member 4, etc.

Period: _____ Group # _____ Group Chapter # _____ Presentation Date: _____

Chapter Title

Essential Question/Goal: How should students complete a quality lesson plan (q)
/Students will have a clear understanding of what the lesson plan should look like (g)
(Choose one approach)

Opening Activity:

- Student(s) Name(s)
- Description of Activity
- Expected Time Frame

Procedure:

- Section One Title: Student(s) Name(s)
 - Subheadings
 - Key Information under Subheading
- Repeat Steps for Section 2, 3 and 4 (Chapter 16)

Closing Activity:

- Student(s) Name(s)
- Description of Activity
- Expected Time Frame

Example of Procedure:

- I. Section One Title
 - A. Subheading Title
 - Key Information
 - More Information
 - B. 2nd Subheading Title
 - Key Information
 - More Information
 - *Keep following outline format*
 - *until your section is complete*
 - C. 3rd Subheading Title
 - Keep the information going
☺



In Case of an Emergency EXCUSED Absence

- Absent on Friday, December 01, 2017
 - You should email your 4 questions and answers in a properly headed PDF to baileya1@fultonschools.org by the start of the class period.
 - Remember to print a hardcopy and place in makeup bucket when you return
- Absent on Presentation Day
 - Submit a hard copy of a proper outline of your group's chapter
 - Outline must include ALL headings, subheadings, summaries and vocabulary
 - Example

Title of Chapter

I. Title of Section I

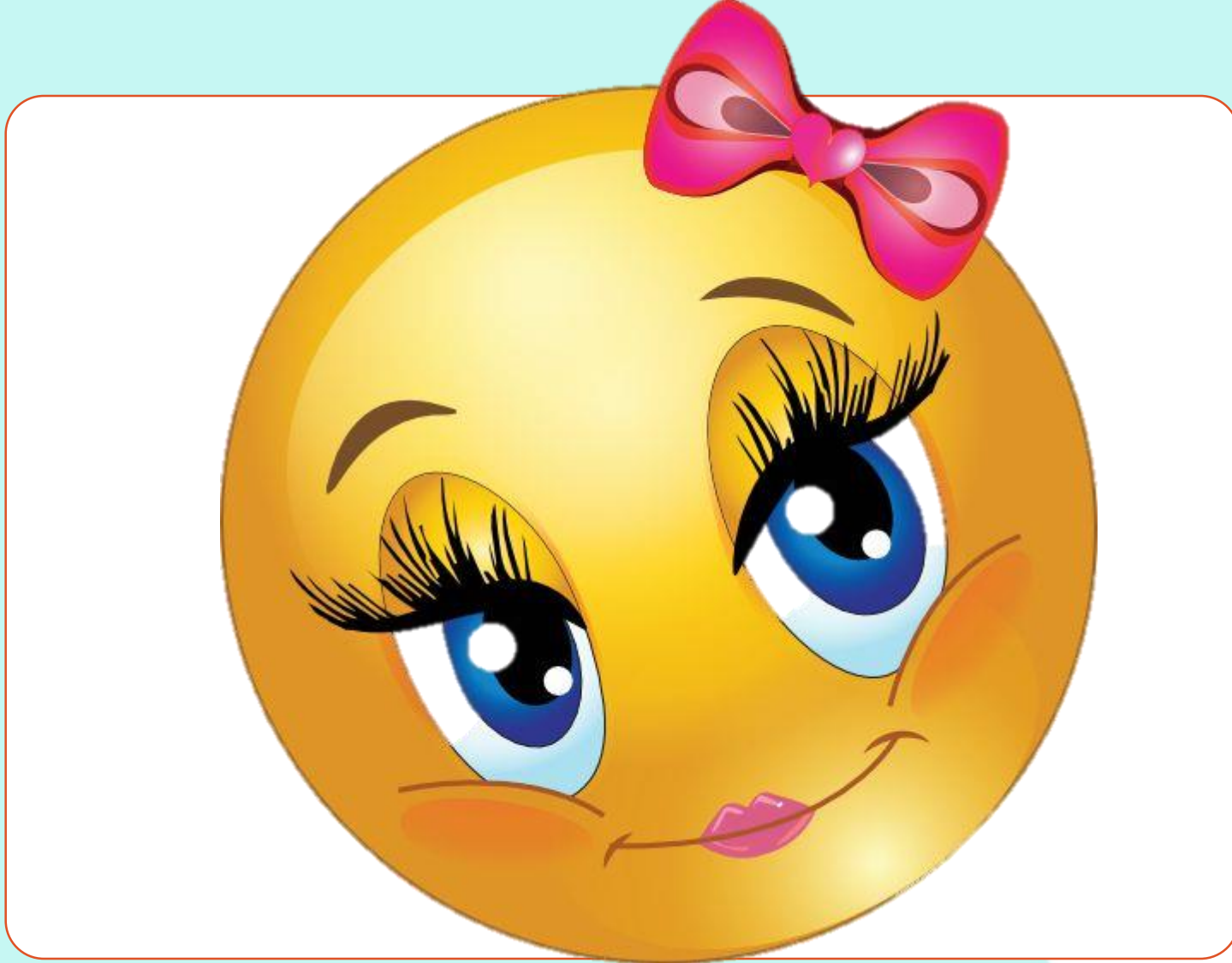
A. Subheading

1. Summary

2. Key Vocabulary

Due on the day of your return. You will still have to make arrangements to present your portion of the presentation.





Let's Have a
Great Class
Period



Yes! I will post PPT to
GCR

